



CLADDING

Attractive, Eco-friendly and Weather Resistant

Storage, Handling, and Installation Guide for PaperStone Cladding

PaperStone® CLADDING is the newest innovative product from Paneltech, makers of original PaperStone®.

It is an ideal choice for architects, and homeowners who prefer to use an FSC-Certified sustainable composite cladding product.

PaperStone® CLADDING offers all the benefits you have come to expect from our award-winning PaperStone® sustainable solid surface products, plus enhanced weatherability, UV and color stability.





PaperStone Cladding cuts/machines exactly the same as our standard PaperStone. Panels can be cut and/or routed with carbide-tipped tooling similar to traditional hardwoods. For more information on the cutting/fabrication of PaperStone, please see our Fabrication Guide. The techniques in this guide are based on the minimum requirements set-forth by Paneltech and should be tested/approved by a building professional. This guide does not imply a warranty of any kind and is superseded by the PaperStone Exterior Warranty*.

What to do when you receive the product?

1. Remove banding and packaging to inspect material immediately upon receipt or at time of will-call.
2. If material is damaged, defective, or incorrect, contact your local distributor immediately.

How to store the product?

1. Store panels indoors and in original packaging, minus the pallet banding.
2. Store flat on a smooth, dry, fully supported surface. ***DO NOT** store vertically on edge.
3. Avoid areas of extreme heat or cold, such as next to open doors and/or in front of heaters.
4. Avoid storing material on surfaces that could harbor moisture.

**Improper storage and/or handling of the product will void any and all warranty.*

How to cut PaperStone Cladding?

1. As mentioned above, PaperStone Cladding panels can be cut/routed just like standard PaperStone with carbide-tipped tooling. For optimal results, cutting with a cnc saw/router or a track saw (such as Festool) is recommended.
2. To avoid chipping during the hole drilling process, a supporting 'backer' board is recommended.

How to install PaperStone Cladding?

- PaperStone Cladding is meant to be installed/mounted onto a ventilated façade system commonly used with other rainscreen designs. The current recommended system is produced by NorthClad Inc. and can be purchased through them. (Fig. 1) For more information, please visit www.northclad.com/products/ef. Any other system should be reviewed by a building professional to ensure the viability.
- Attachment of the system to the structural wall should be determined by a building professional. Local building codes should also be taken into consideration.
- The ventilation within this type of system is critical. Please review the diagram (Fig. 2) for the recommended minimum ventilation gaps.
- PaperStone Cladding is an organic material that can move to a certain extent, which is why an expansion/contraction gap of $\frac{1}{4}$ " (minimum) must be incorporated.
- Stainless steel fasteners are recommended when attaching the PaperStone Cladding to the NorthClad mounting system.
- The PaperStone Cladding must be fastened to a minimum of three of the "NorthClad high performance, prefinished, extruded aluminum, vertical furring strips". (Fig. 3)

Figure 1: PaperStone Cladding used as cladding with a rainscreen design

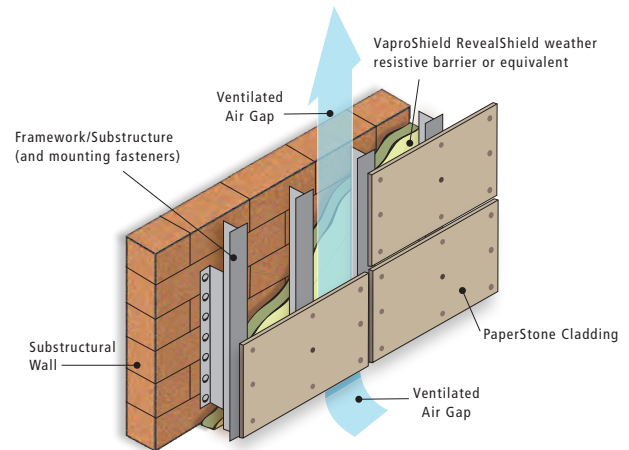


Figure 2: Ventilation Space

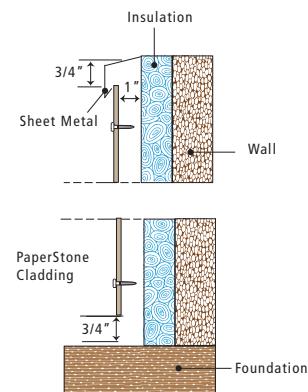
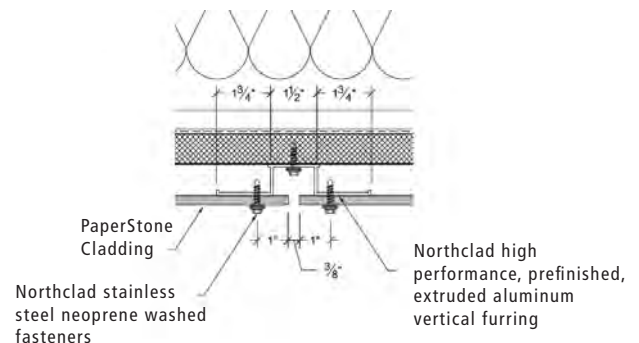
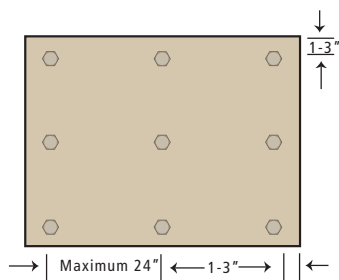


Figure 3



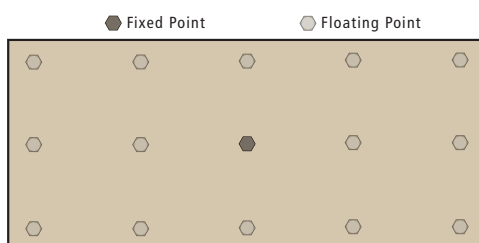
These furring strips must not be spaced out more than a maximum distance of 24". The fasteners must be at least 1-3" away from the panel edges. The drawing below (Fig. 4) illustrates both of these points.

Figure 4: Three supports scenario



- In order to allow the PaperStone Cladding panels to have the ability to freely expand and contract, the implementation of a single "fixed point" is recommended. The hole for the "fixed point" should be drilled to the diameter of the fasteners. All other fasteners will be "floating points" as shown in this drawing. (Fig. 5) These holes should be a minimum of 3 mm larger than the diameter of the fasteners. As you can see, it is also recommended that the "fixed point" be located as close as possible to the center point of the panel.

Figure 4: Three supports scenario



Care & Maintenance?

- PaperStone Cladding does not require a finish product to be applied.
- Should PaperStone Cladding need to be cleaned, a mild soap/water cleaning solution and a rag should be the first approach. A final rinse with clean water to remove any soap residue may be necessary.
- Pressure washing can be an option, but one that should be done with extreme caution to avoid damaging the product.
- If a finish product is desired to 'rejuvenate' the appearance of the PaperStone Cladding, we recommend applying The PaperStone Finish as according to the instructions on the container.

After reviewing this guide, should you have further questions, please contact your local distributor.

If we do not have a distributor for your area, please contact us directly at 360-538-1480.



The mark of responsible forestry

