

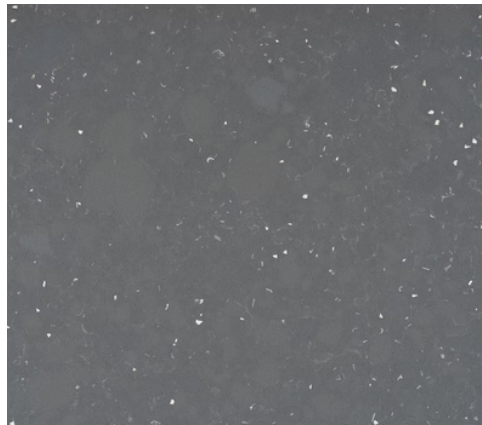


Available through  
**CaraGreen**  
Healthy Building Materials  
www.caragreen.com • 919.929.3009  
info@caragreen.com

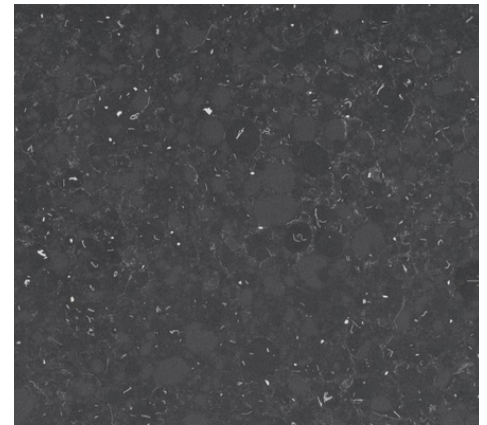
Earthic is a sustainable surface with a maximum of 10% silica, created with an innovative composition and complex production process that is the product of years of R&D. It utilizes a selection of premium minerals, recycled glass, PET, bioresin, and Dekton fragments to reduce the extraction of raw materials, limiting soil erosion and CO2 emissions. Additionally, it's manufactured with 99% recycled water and 100% certified renewable electric energy. Earthic incorporates up to 30% recycled components into its eco-conscious surfaces.



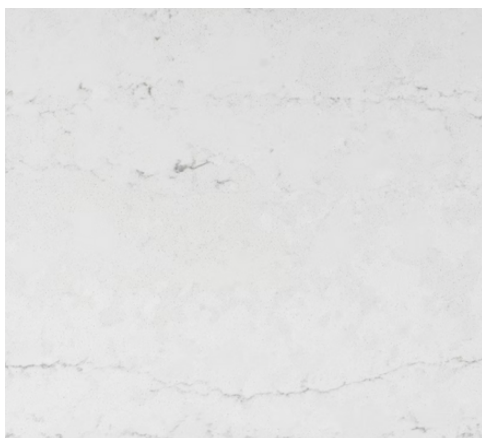
Ffrom 01



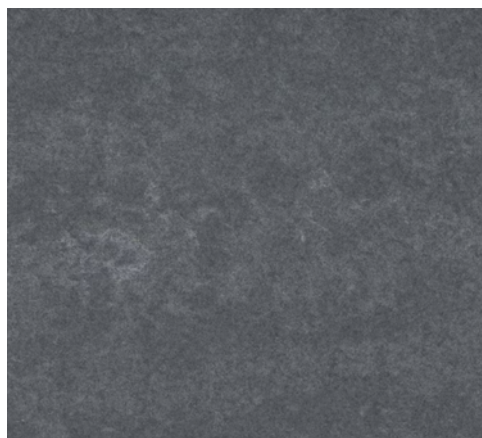
Ffrom 02



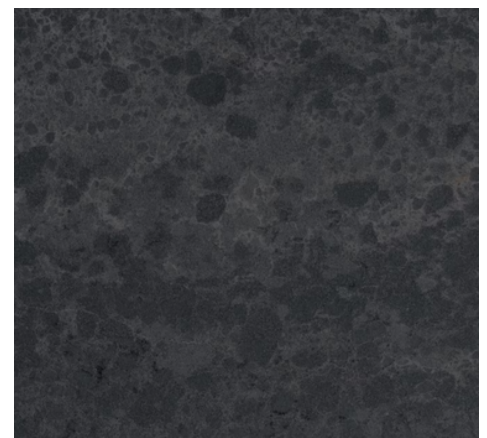
Ffrom 03



RAW A



RAW G



RAW D



Available through  
**CaraGreen**  
Healthy Building Materials

[www.caragreen.com](http://www.caragreen.com) • 919.929.3009  
[info@caragreen.com](mailto:info@caragreen.com)

## General Info:

- 100% certified electric renewable energy
- 0.665 KgCO<sub>2</sub>/Kg Low Carbon Footprint
- 99% Recycled & reused water
- Q10+ with hybrid+ technology less silica

